

Name:
Worksheet #1

Due : _____ points: _____

Results from the Fall 2014 Survey I emailed out:

Frequency table results for cell bill:

Group: gender=Female

cell bill	Frequency
0 to 99	22
100 to 199	13
200 to 299	7
300 to 399	1
400 to 499	1
500 to 599	1
600 to 699	1

1) Find the mean cell phone bill for each group.

2) Estimate the Median cell phone bill for each group

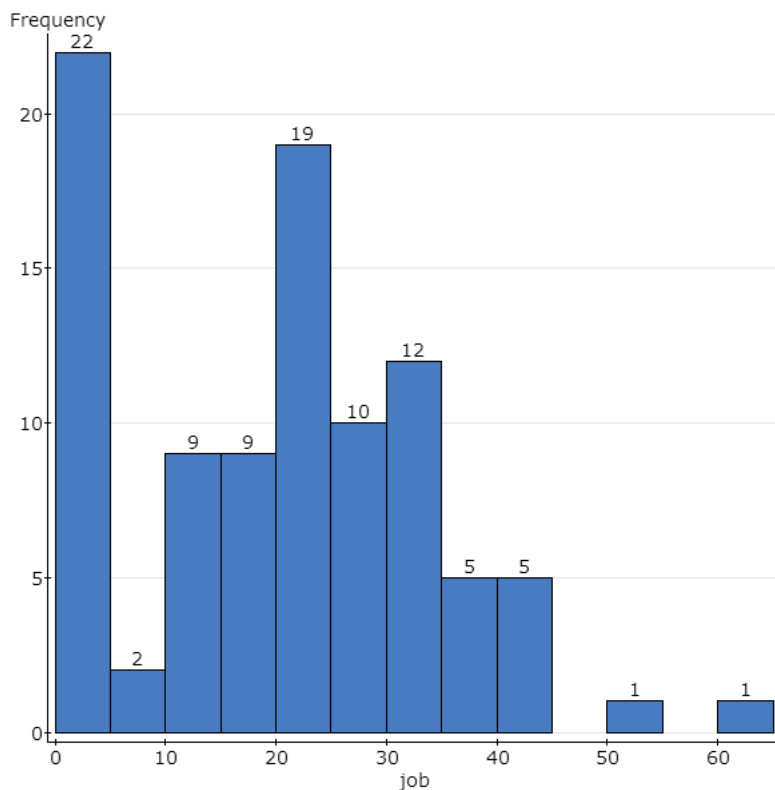
Frequency table results for cell bill:

Group: gender=Male

cell bill	Frequency
0 to 99	31
100 to 199	5
200 to 299	3
300 to 399	1

3) Estimate the Mode cell phone bill for each group

The Histogram below represents the number of hours Math 160 students spend at their job.



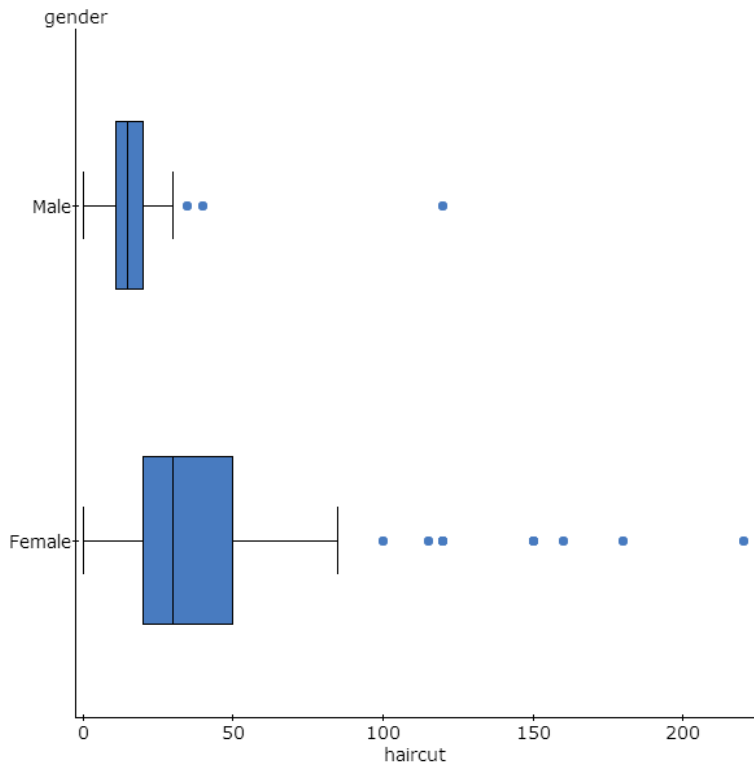
4) Find the mean number of hours spent on the job.

5) Estimate the Median number of hours on the job.

6) Estimate the Mode number of hours on the job.

Your first StatCrunch assignment will be posted on MyStatLab under a new tab called ANNOUNCEMENTS. That will be done on Thursday afternoon 5 pm.

Below is a boxplot of how much Math 160 students pay for a haircut (including tip)



7) Find the median amount that male students spend.

8) Find the median amount that female students spend.

9) Which group has the most variable amount spend on haircuts?

10) Is spending \$160 on a haircut an outlier for females?

11) Estimate the percentage of female students who spend more than \$50 on a haircut.

Name:
Worksheet #1

Due : _____ points: _____

Here are the summary statistics and 5 number summary for the hours of sleep Math 160 students slept on a particular night.

Summary statistics for sleep:

Group by: gender

gender	n	Mean	Variance	Std. dev.	Median	Range	Min	Max	Q1	Q3
Female	50	6.87	2.4572449	1.5675602	7	6.5	3	9.5	6	8
Male	45	6.9222222	3.4540404	1.8585049	7	11	0	11	6	8

12) What percentage of female students slept less than 6 hours?

13) What percentage of male student slept more than 7 hours?

14) If a female student sleeps 10 hours, is that an outlier?

15) Find the IQR for the number of hours females slept?

16) Find the IQR for the number of hours males slept?

17) Does one group have a more variable sleeping schedule? Explain your answer.

Your first StatCrunch assignment will be posted on MyStatLab under a new tab called ANNOUNCEMENTS. That will be done on Thursday afternoon 5 pm.

Using your TI-84 Calculator, find the summary statistics for the following sample of heights obtained from our class survey. (heights are in inches)

75
65
73
69
64
66
60
72
61
60
61
67
70

18) Find the mean height

19) Find the median height

20) Find the mode height

21) Find the standard deviation of heights

22) What is the 5 number summary?

23) Find the IQR.